

SonoMax 9

GET MAX++ PLATFORM

- **High-resolution 23.8"**
Large HD LED Screen
- **15.6"Angle 30° Touch Screen**
- **25cm Flexible**
Height Adjustment
- **5 Active Connectors**
High Density
- **Q-image, X-contrast, Q-beam, Q-flow**
- **SonoContrast , Shear Wave Elastography**
- **Volume Flow , SonoPW , Sono-OB**
- **Sono Crystal , MVI**
- **Strain and Strain Rate**
- **Max ++ new latest platfoerm tecnology**
- **Built-in battery up to 120mins**



X-Bit 80

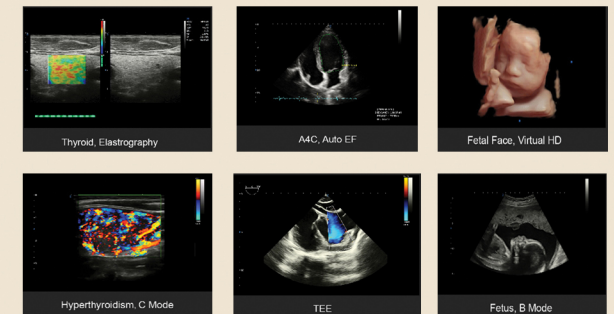
EMPOWER YOUR FINGURE PRINTS

- **High-resolution 23.8" LED HD**
with a 13.3" touchscreen
- **Auto EF , Strain and Strain Ratio**
- **Q-image, X-contrast, Q-beam, Q-flow**
CI (Multiple compound imaging)
SRA(Speckle Reduction Algorithm)
- **Sono-OB, SonoPW**
- **Elastography SonoNeedle**
- **MVI - Micro Vessel Image**
- **SoundFlow , Sono Crystal , SonoContrast**
- **NIT Technology**
(High Performance,Parallel Processing)
- **4 High Density Sockets Active**
- **Standard Battery up to 120 min**



MEDICAL CITY
For Medical Devices

CHISON
Value Beyond Imaging



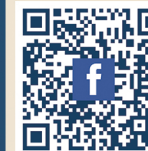
01003456178 – 01003451345

#Your_target_our_mission



01003456178 – 01003451345

#Your_target_our_mission



<http://www.medicalcityeg.com/>

MedicalCityMC@Facebook

Head Quarter :1st Administrative floor, Al-safa Tower,
Makkah Towers, New Oncology Institute Road,
Kafr Elsheikh 01003456178 – 01003451345

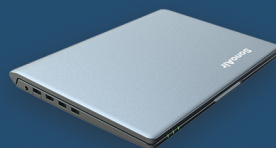
Eco 3

POWERFUL AND AFFORDABLE



SonoAir 30

REDEFINE THE FUTURE



- 26 mm thick
Sleek & Slim
- Powered by the Latest AIR Platform
- Ultra fast
Boot up in 25s/ Awake in 3s
- 4 Probe Ports
Easy to Connect
- 2.1 kg Ultra-Lightweight Design
- 14.1-Inch Responsive Touch Screen
- Long Battery Life

Q-Bit 7

MORE THAN EXPECTED

CHISON
Value Beyond Imaging



- 21.5" LED - 90°
medical HD monitor
- 4-active sockets
high density
- Unique 4D Quality :
[virtual HD, Depth view]
- Advanced technologies :-
[MCI, SRA, Q-beam,
Q-image ,Q-flow]
- Built-in battery
up to 80min

E-Bit 10

4D BETWEEN YOUR HANDS

- 15" LED, tilting 30°
- 2-High density sockets
- Battery up to 180 min
- Light weight up to 7 kgs
- Advanced modes:
[FHI, Q image, Q beam]
- Virtual HD, Elastograph
- Support All Applications



SonoBook 7

CATCHING THE EXCELLENCE



- 15" Medical HD monitor
- Ultralight, Slim, 5.4Kg (with battery)
- High-performance Architecture:
[STRESS ECHO, ECG, SSD, WIFI]
- TDI, Color M mode, Auto EF, Auto IMT
- Elastography, Real time panoramic
- X-contrast, FHI, MCI, Super Needle
- Supports 20kinds of probes

C-Bit 5pro

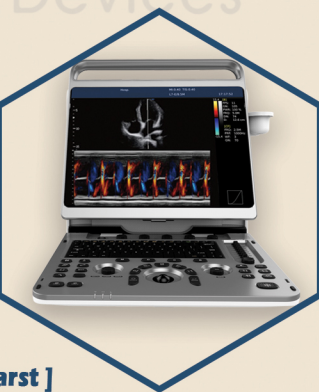
EXPERTS WITHIN TOUCH

- 21.5" HD LED
Rotatable : 90°
- 10.1" HD
Touch panel
- Advanced tools
Sono AI-OB , MCI , SRA
Q-beam , Q-flow , Q-image
Wide angle TV probe
Smart Standby Mode
- Unique 4D Quality
Virtual HD , Depth view
- Quantitative Elastography
- Stress Echo , ECG ,TDI
- 4 - high Denisity Sockets
- battery up to 80mins



E-Bit 40

CHECK YOUR BEATS



- 15" LED, tilting 30°
- 2-High density sockets
- Battery up to 180 min
- Light weight up to 7 kgs
- Advanced modes:
[TDI, C-M mode, Q beam, X contrast]
- Efficiency for Moving Organs
- All Ultrasound Applications