

Portable Ultrasound Device Mindray DP 15 Doppler :

With the best-in-class combination of performance and ergonomic style, Ultrasound Device DP-15 is a perfect selection for B/W system. wonderful image quality and PW doppler imaging with auto activity meet the necessities of various applications, serving to you to boost your diagnostic confidence. High definition led with full screen style of Ultrasound Device DP-15 provides you with new operation experience.



DP-15

Digital Ultrasonic Diagnostic Imaging System

Ultrasound Device Performance

PW

PW Doppler and Auto Trace reveal details of blood flow for more comprehensive diagnosis.

Tissue Harmonic Imaging

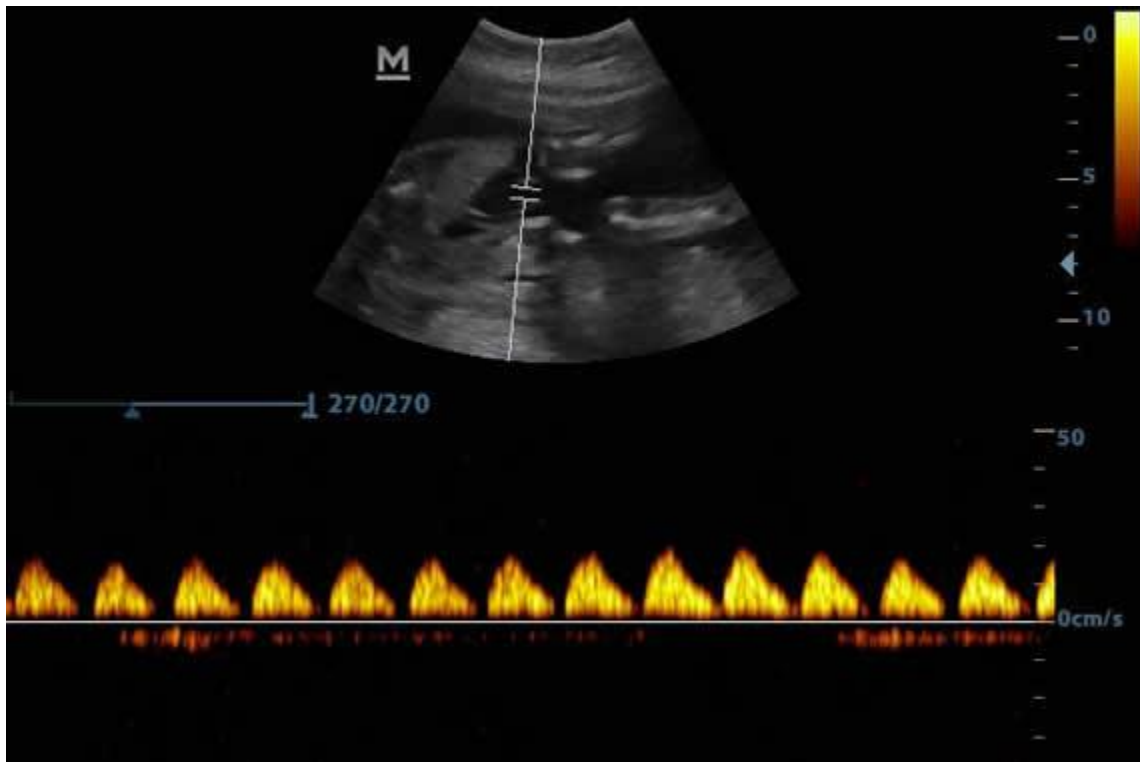
Utilizing second harmonics generated from tissue boundary layers, THI significantly enhances contrast resolution and improves image quality especially for technically difficult subjects.

TSI

Tissue Specific Imaging optimizes the image quality based on the properties of the tissue being scanned. Four imaging options are available including general, muscle, fluid and fat.

ExFOV

Discover better diagnostic information through extended view of the anatomical structure on all convex and linear probes.



Workflow iStorage™

Directly transfer images and reports to PC via network cable.

iZoom™

Gain instant full screen view on the click of a single key.

iTouch™

Gain instant auto image optimization in B mode on the click of a single key.

iStation™

Mindray's unique Patient Information Management System allowing you to integrate, review, archive and retrieve patient data effectively

iScanhelper

Dedicated inbuilt tutorial software, iScanHelper provides you with an interface to learn “How & What” of ultrasound scanning. Supported with excellent practical examples and illustrations, iScanHelper, with its easy and practical usability, is an effective educational tool either for beginners or experienced professionals.

IP

Image enhancing mechanism consisting of various parameters

Ergonomics

- 12.1 inch high definition LED
- Full Screen design for easy cleaning
- 30 degree tilting angle adjustable monitor
- Maximum 2 universal transducer connectors
- User friendly control panel with backlit
- Light and compact design for extreme portability

